

CHANGÓ CONCIERTOS

PA

5 + 5 Meyer Sound Melodie
2 Subwoofer Meyer 700 HP
Procesador Behringer Ultradrive Pro DCX 2496

MONITORES

4 Maga ME 12WA
2 Meyer UM100P

CONTROLES

Allen & Heath SQ7 (FOH)
Allen & Heath SQ7 (Mon)
Stage Rack GX48 (48 in, 16 out)

MICROFONIA

4 AUDIO TECHNICA MICROFONO AT-3031
4 SENNHEISER MICROFONO E-904
2 SENNHEISER MICROFONO MD-421 II
1 SHURE MICROFONO BETA 52A
1 SHURE MICROFONO BETA 91A
5 SHURE MICROFONO SM57
5 SHURE MICROFONO SM58
6 DI BSS AR 133
2 passive DI Palmer PAN 01

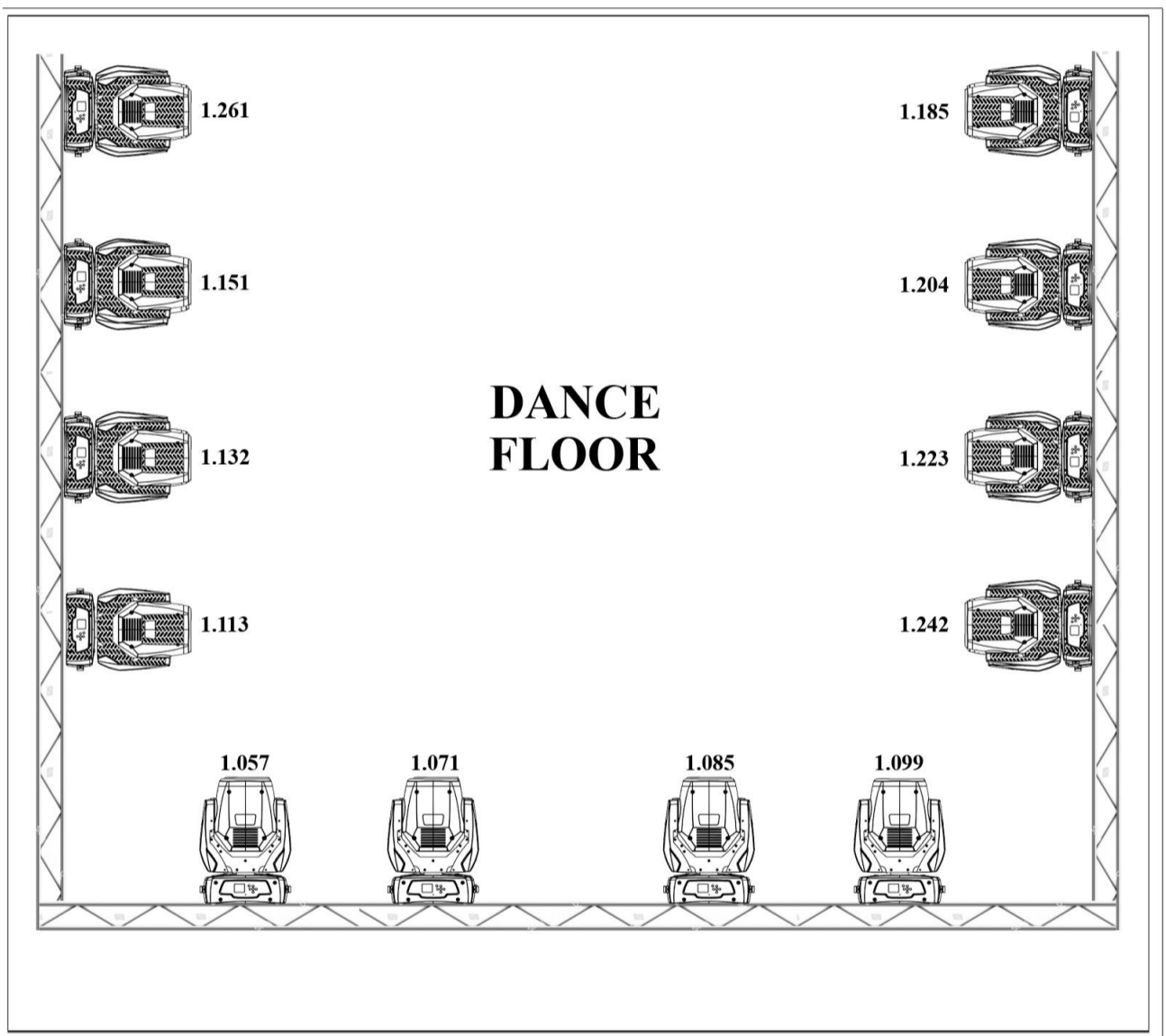
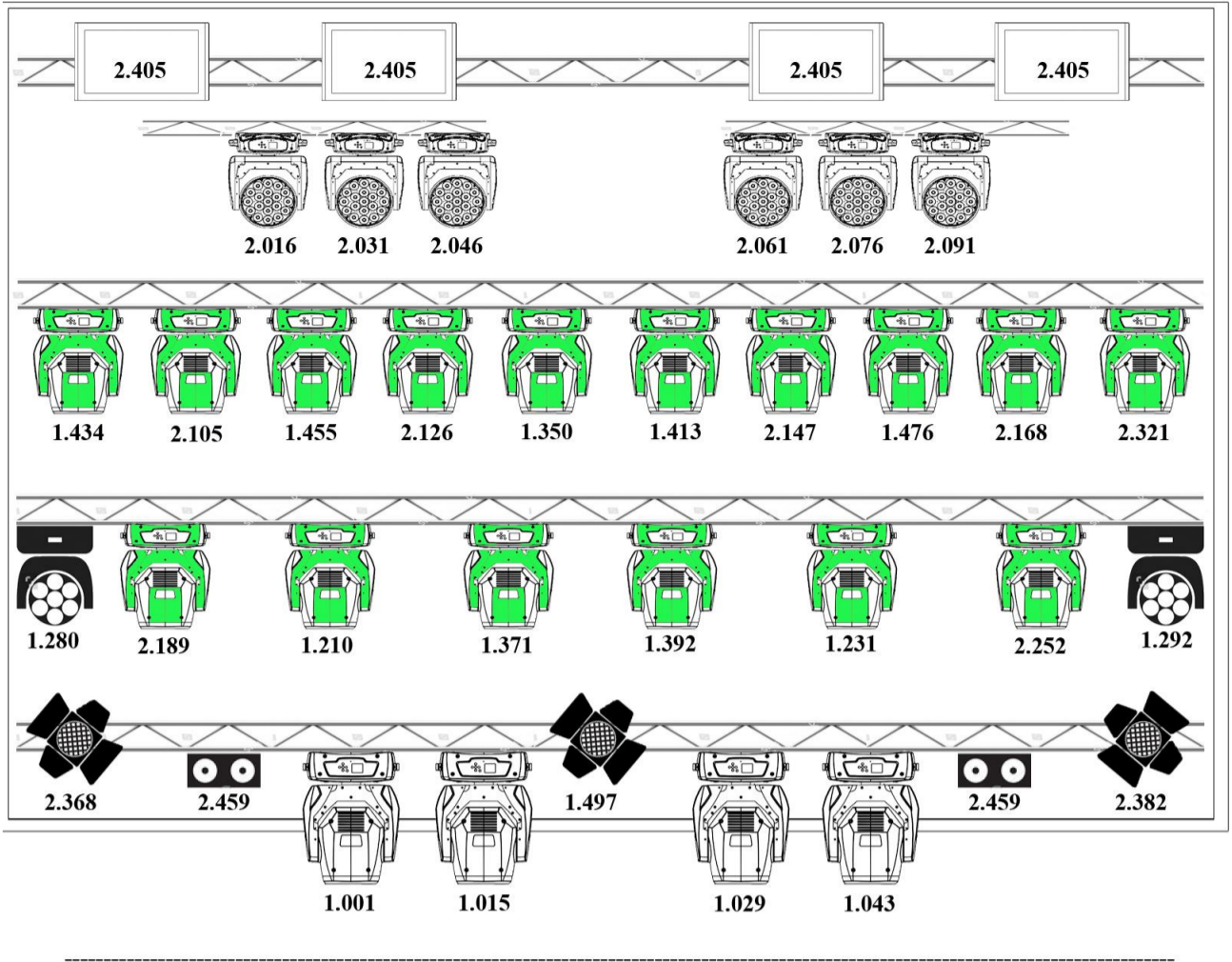
VIDEO


PANTALLA LED ESCENARIO SMD-HD
4,8m ancho x 1,9m alto
400000 PIXEL ULTRAHD 9000 NITS


ESCENARIO


7m boca x 5,5m fondo x 1,35m altura (público)

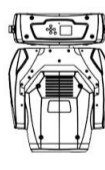
CHANGÓ VENUE STAGE PLOT LIGHTS





- 


HQ POWER ARAS 45 W (12 CH)
- 


CHAUVET COLORdash PAR-HEX 7 (8CH)
- 

UNKNOWN 380 BEAM +SPOT+WASH MOV HEAD LIGHT (19CH)
- 

MARTIN MAC 250 KRYPTON 16 BIT (14 CH)
- 

NICOLS BIRDY WASH 120 RGB (14 CH)
- 

FUTURE LIGHT PLB-130.i (12CH)
- 

CHAUVET COLOR PALETTE (27CH)
- LIGHT DESK: AVOLITES / QUARTZ (V.11.1)**
- 

SHOWTEC STAGE BLINDER (1CH)